

# FRUITS & VEGETABLES

## DEPARTMENT 550

If you haven't picked up your exhibitor tags before receiving day, you can pick them up in Building F when you bring in your entries.

### ENTRIES :

- **Entry Forms Accepted through Friday, August 23, 2024 by 5 PM.**
- **NO ENTRY FEES~ONLY SWEEPSTAKES CASH PRIZES**
- Exhibits to fair on Thursday, August 29, 2024 between 1-7 PM
- Exhibits picked up on Monday September 2, 2024, from 6:30-7:30 PM or Tuesday September 3, 2024, from 8 AM-12 Noon

### RULES AND INFORMATION:

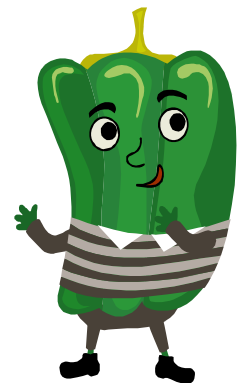
- Limited to residents of Mariposa County and Eastern Madera County (east of Madera Canal).
- Judging will be closed.
- All entries in this division must be grown by the exhibitor in his/her own county of residence unless otherwise noted.
- The fair will furnish Styrofoam display trays.
- Enter only the number of specimens requested; uniformity of size is important. All exhibits must be on a display plate unless otherwise noted.
- Type of produce desired for exhibit will be the uniform commercial grade rather than overgrown.

### AWARDS:

- Judging: American System of Judging
- Sweepstakes ~ \$20~15~10

### BUSH AND POD VEGETABLES-CLASS A

<u>LOT</u>	<u>DESCRIPTION</u>	<u>QUANTITY REQUIRED</u>
1	BEANS, snap/wax,	3
2	EGGPLANT,	1
3	PEPPERS, chili,	2
4	PEPPERS, other,	2
5	TOMATO, large,	2
6	TOMATO, cherry,	3
7	TOMATO, other,	2
8	OKRA,	2
9	OTHER BUSH/POD VEGETABLE,	2



### HERBS-CLASS B

10	ANY HERB, in jar/vase
----	-----------------------

### LEAFY AND STEM VEGETABLES-CLASS C

		<u>QUANTITY REQUIRED</u>
11	CABBAGE, green or red	1
12	CHARD, SWISS,	1 bunch, 6 stems
13	CORN, sweet, unhusked,	2
14	OTHER LEAFY/STEM VEGETABLE,	2

**ROOT, BULB AND TUBER VEGETABLES-CLASS D**

<b>Lot</b>		<b>QUANTITY REQUIRED</b>
15	BEETS,	2
16	CARROTS,	2
17	GARLIC,	2
18	ONIONS,	2
19	POTATOES,	2
20	OTHER ROOT/BULB/TUBER VEGETABLE	2

**VINE VEGETABLES-CLASS E**

21	CUCUMBER,	1
22	CUCUMBER, slicing	1
23	GOURD, ornamental,	1
24	MELON,	1
25	PUMPKIN, miniature,	1
26	PUMPKIN, any other,	1
27	SQUASH, table size,	1
28	SQUASH, table size, yellow,	1
29	SQUASH, winter	1
30	WATERMELON,	1
31	OTHER VINE VEGETABLES,	1

**FRUITS AND NUTS-CLASS F**

32	APPLES,	2
33	BERRIES,	1 Basket
34	FIGS,	2
35	GRAPES,	2 Bunches
36	NECTARINES,	2
37	NUTS,	3
38	PEACHES,	2
39	PEARS,	2
40	PLUMS,	2
41	ANY OTHER FRUIT,	2

**LARGEST PUMPKIN CONTEST-CLASS G**

42	LARGEST PUMPKIN,	1
----	------------------	---

**NATURE'S NOVELTIES-CLASS H**

Judged on Size and or Uniqueness

43	CORN STALK, TALLEST	1
44	WEED, TALLEST	1
45	SUNFLOWER, head with 5" of stalk, largest diameter head retaining at least 95% seeds.	1
46	ANY FRUIT,	1
47	ANY VEGETABLE,	1

**JUST FOR FUN-CLASS J**

48	Any Other	1
----	-----------	---



